

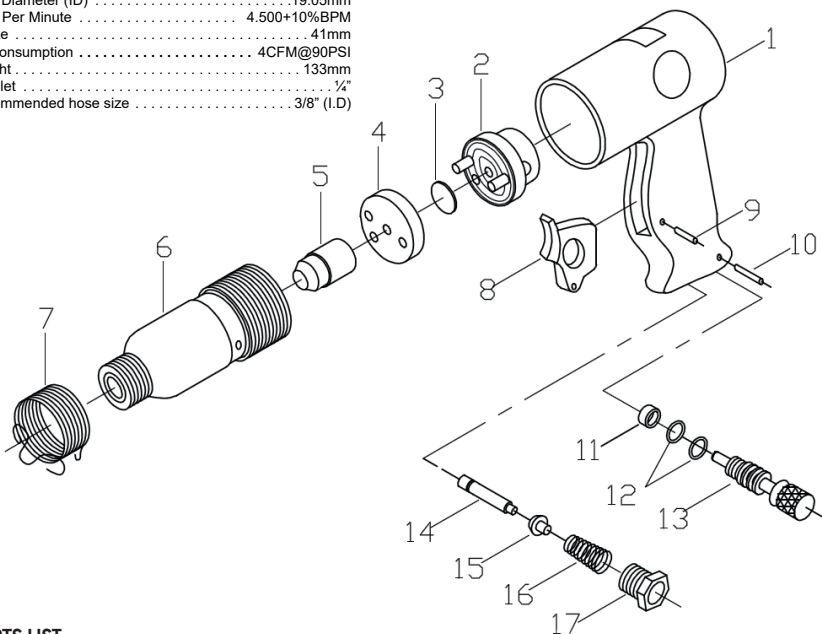


52331

- | | |
|---|--|
| (ES) KIT HERRAMIENTAS PNEUMÁTICAS | (RO) SET DE INSTRUMENTE PNEUMATICE |
| (EN) AIR TOOLS KIT | (NL) SET VAN PNEUMATISCHE |
| (FR) COFFRET OUTILS PNEUMATIQUE | (HU) PNEUMATIKUS SZERSZÁMKÉSZLET |
| (DE) SATZ DRUCKLUFTWERKZEUGE | (RU) НАБОР ПНЕВМАТИЧЕСКИХ ИНСТРУМЕНТОВ |
| (IT) KIT PISTOLA + CRIC PNEUMATICO + ACC 68 PEZZI | (PL) ZESTAW NARZĘDZI PNEUMATYCZNYCH |
| (PT) KIT FERRAMENTAS PNEUMÁTICA | |

SPECIFICATIONS

Chisel Shank (Round) 10.2mm
 Bore Diameter (ID) 19.05mm
 Blow Per Minute 4.500+10%BPM
 Stroke 41mm
 Air Consumption 4CFM@90PSI
 Length 133mm
 Air Inlet 1/4"
 Recommended hose size 3/8" (I.D.)



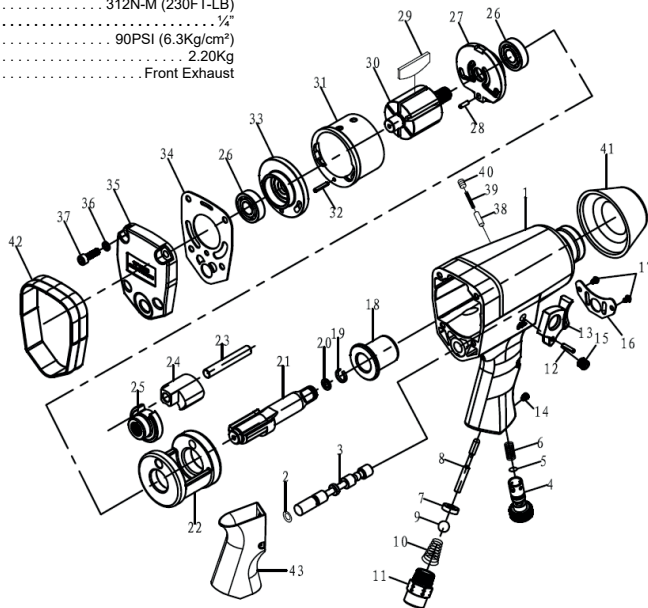
PARTS LIST

Nº	DESCRIPCIÓN	DESCRIPTION	QTY
1	1040-01	Housing	1
2	1040-02	Valve Case	1
3	1040-03	Valve Disc	1
4	1040-04	Bonnet	1
5	1040-05	Piston	1
6	1040-06	Cylinder	1
7	1040-07	Spring	1
8	1040-08	Trigger	1

9	GB/T879.1 3*14	Pin	1
10	GB/T879.1 3*18	Pin	1
11	1040-09	Choke Valve	2
12	1040-10	O-Ring	1
13	1040-11	Throttle	1
14	1040-12	Valve Stem	1
15	1040-13	Intake Valve	1
16	1040-14	Spring	1
17	1040-15	Air Inlet	1

SPECIFICATIONS

Bolt Capacity	9/16" (14mm)
Free Speed	7,000RPM
Average air consumption	5CFM@90PSI
Max torque	312N-M (230FT-LB)
Air Inlet	3/4"
Air Pressure	90PSI (6.3Kg/cm ²)
Weight	2.20Kg
Air Exhaust	Front Exhaust

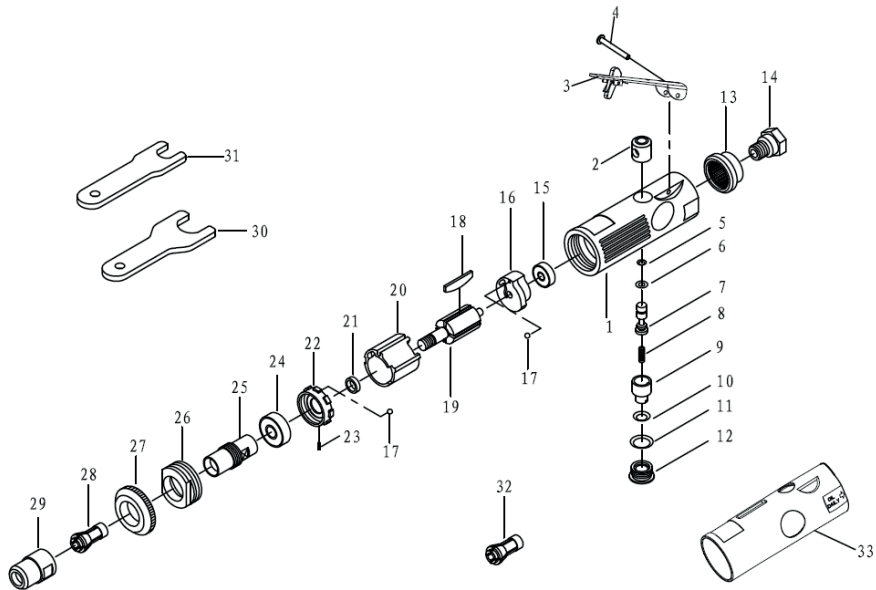

PARTS LIST

Nº	DESCRIPCIÓN	DESCRIPTION	QTY
1	WFI-1070-01	Housing	1
2	O RIGN 6.4*1.9	O-Ring	1
3	WFI-1070-02	Reversal Regulator	1
4	WFI-1070-03	Flow Regulator	1
5	JB/T6659-2007 8*2	O-Ring	1
6	WFI-1070-04	Regulator Spring	1
7	WFI-1070-05	Bushing	1
8	WFI-1070-06	Pin	1
9	GB/T308-2002 9.525	Steel Ball	1
10	WFI-1070-07	Taper Spring	1
11	WFI-1070-08	Air Inlet Connector	1
12	GB/T879.2-2000 3*14	Straight Pin	1
13	WFI-1070-09	Trigger	1
14	GB/T79-2000 M5*8	Screw	1
15	GB/T77-2000 M8*6	Screw	1
16	WFI-1070-10	Steel Disc Cover	1
17	Screw ST3.2*6	Screw	2
18	WFI-1070-11	Oily Bushing	1
19	WFI-1070-12	Anti-off Circle	1
20	GB/T3452.1-1992 6*1.8	O-Ring	1
21	WFI-1070-13A	Drive Shaft	1

22	WFI-1070-14	Hammer Cage	1
23	WFI-1070-15	Pin	1
24	WFI-1070-16	Hammer Dog	1
25	WFI-1070-17	Drive Cam	1
26	GB/T276-1994 6001-2Z	Bearing	2
27	WFI-1070-18	Front Cylinder Head	1
28	GB/T879.2-2000 3*10	Straight Pin	1
29	WFI-1070-19	Blade	6
30	WFI-1070-20A	Rotor	1
31	WFI-1070-21	Cylinder	1
32	GB/T879.2-2000 3*16	Straight Pin	1
33	WFI-1070-22	Back Cylinder Head	1
34	WFI-1070-23	Sealing Gasket	1
35	WFI-1070-24	Real Cover	1
36	GB/T93-1987 5	Spring Gasket	4
37	GB/T70.1-2000 M5*16	Screw	4
38	WFI-1070-25	Pin	1
39	WFI-1070-26	Spring	1
40	GB/T70.1-2000 M5*6	Screw	1
41	WFI-1070-27	Front Jacket	1
42	WFI-1070-28	Back Jacket	1
43	WFI-1070-29	Handle Jacket	1

SPECIFICATIONS

Collet Size	1/8", 1/4", 3mm, 6mm
Free Speed	25,000RPM
Average air consumption	4CFM@90PSI
Air Inlet	1/4"
Weight	0.36Kg
Exhaust	Rear Exhaust



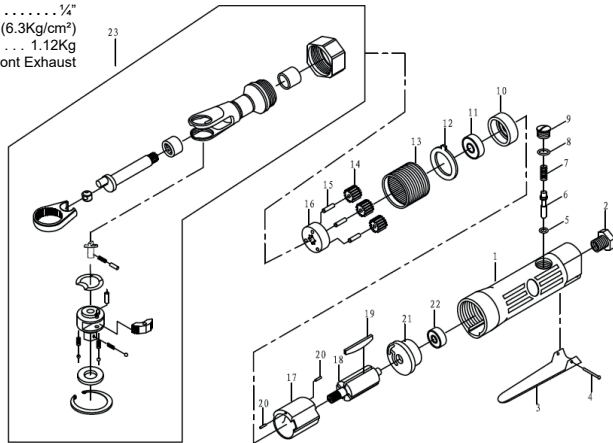
PARTS LIST

Nº	DESCRIPCIÓN	DESCRIPTION	QTY
1	WFG-1210-01	Housing	1
2	WFG-1210-02	Valve Bushing	1
3	WFG-1210-03	Trigger Component	1
4	GB/T873-86 3*24	Rivet	1
5	O RING 3.3*1.5	O-Ring	1
6	JB/T 6659-1993 4*2	O-Ring	1
7	WFG-1210-04	Pin	1
8	WFG-1210-05	Spring	1
9	WFG-1210-06	Adjusting Knob	1
10	O RING 7*2	O-Ring	1
11	O RING 11.2*2.4	O-Ring	1
12	WFG-1210-07	Nut	1
13	WFG-1210-08	Muffle Cover	1
14	WFG-1210-09	Air Inlet Connector	1
15	GB/T276-1994 696-2Z	Bearing	1
16	WFG-1210-10	Back Cylinder Head	1

17	GB/T308-2002 Ø2.5	Steel Ball	2
18	WFG-1210-11	Blade	4
19	WFG-1210-12	Rotor	1
20	WFG-1210-13	Cylinder	1
21	WFG-1210-14	Washer	1
22	WFG-1210-15	Front Cylinder Head	1
23	GB/T119.1-2000 1.5*5	Pin	1
24	GB/T276-1994 608-2Z	Bearing	1
25	WFG-1210-16	Collet Holder	1
26	WFG-1210-17	Locking Ring	1
27	WFG-1210-18	Housing Cap	1
28	BQ04-01-01	1/4" Collet	1
29	WFG-1210-19	Collet Nut	1
30	WFG-1210-20	Big Spanner	1
31	WFG-1210-21	Small Spanner	1
32	BQ04-01-03	1/8" Collet	1
33	WFG-1210-22	Jacket	1

SPECIFICATIONS

D Size	3/8" & 1/2"
Free Speed	150RPM
Average air consumption	5CFM@90PSI
Max torque	.61N-M
Air Inlet	1/4"
Air Pressure	90PSI (6.3Kg/cm ²)
Weight	1.12Kg
Air Exhaust	Front Exhaust



PARTS LIST

Nº	DESCRIPCIÓN	DESCRIPTION	QTY				
1	WRF-1060-01	Housing	1	12	WRF-1060-08	Washer	1
2	WRF-1060-02	Air Inlet Connector	1	13	WRF-1060-09	Gear Ring	1
3	WRF-1060-03	Trigger	1	14	WRF-1060-10	Planet Gear	3
4	GB/T873-86 3*24	Rivet	1	15	WRF-1060-11	Planet Pin	3
5	O RING 3.2*1.9	O-Ring	1	16	WRF-1060-12	Planet Cageincl	1
6	WRF-1060-04	Pin	1	17	WRF-1060-13	Cylinder	1
7	WRF-1060-05	Spring	1	18	WRF-1060-14	Rotor	1
8	JB/T6659-2007 8*2	O-Ring	1	19	WRF-1060-12	Blade	4
9	WRF-1060-06	Nut	1	20	GB/T879.2-2000 1.5*6	Straight Pin	2
10	WRF-1060-07	Front Cylinder Head	1	21	WRF-1060-15	Back Cylinder Head	1
11	GB/T276-1994 608-2Z	Bearing	1	22	GB/T276-1994 626-2Z	Bearing	1
				23	WRF-1060-16	Ratchet Handle Component	1

52331



www.jbmcamp.com

JBM CAMPLLONG, S.L.U.
 CIM La Selva - Ctra. Aeropuerto km. 1,6 Nave 2.2
 CP 17185 - Vilobí d'Onyar - GIRONA

jbm@jbmcamp.com
 Tel. +34 972 405 721
 Fax. +34 972 245 437